

# Candlewood Tiny Homes and Cabins

Are you in need of a Tiny House, Cabin on the Lake or Island, or a Guest house? Are you retiring or just starting out and need a smaller place? Candlewood Tiny Homes are CSA Approved and ready to move to any location you want. Choose our trustworthy solution that will meet all your local building codes and provide you with a high-end home to fill your dreams.

We sell small Ready-to-Move Houses delivered for free within 200 kms. We will bring the building and set it up according to specs with treated wood blocks and or concrete and level it. All in one day! Your options are endless.

- Full kitchen which includes counterspace, cupboards, sink, stove, fridge/freezer, and microwave.
- Full bathroom—sink, corner shower, toilet, and, in most cases, a commercial stacking washer and dryer system.
- Windows are dual-pane and Egress where needed.
- Floors are finished often with vinyl plank flooring or a similar ceramic based product for summer cottages that can be frozen over winter.
- Walls and ceiling are usually finished with clear urethane pine boards with the options of a few different paneling options.

Built inside a Premier Building our tiny homes offer the look and durability to last a lifetime. Comes with hot water heater and air exchanger. Thermostatically controlled baseboard heaters (or the heating system of your choice) together with R22 insulation in the 2x6 walls and R30 in the ceiling will keep you warm in the bitter Canadian winter.



**CountrySide Kenora**

office: (807) 789-4450

cell: (807) 464-6169

[sales@countriesidekenora.ca](mailto:sales@countriesidekenora.ca)

[www.countriesidekenora.ca](http://www.countriesidekenora.ca)

Contact us today for a free quote



**CANDLEWOOD  
HOMES**

# The Country View

## 14 x 30 Single Slope Cottage with Kitchenette, Bathroom, & Bedroom

### DOORS AND WINDOWS

- (2) 30" INTERIOR DOORS
- (1) 36" ENTRY DOOR WITH WINDOW
- (1) 24"X36" DUAL PANE WINDOWS
- (6) 30"X60" EGRESS WINDOWS WITH TRANSOM ABOVE

### BATHROOM

- 38"X38" NEO ANGLE SHOWER WITH GLASS DOOR
- (1) VANITY SINK
- (1) TOILET
- HOOK-UPS FOR WASHER AND DRYER

### KITCHEN

- (1) SINGLE KIT SINK
- FRIDGE (9 CUBIC FT)
- 30" RANGE
- MIRCOWAVE

### INSULATION

- R28 FLOOR
- R22 WALLS
- R32 CEILING

### EXTERIOR

- LP SMARTSIDE—URETHANE
- METAL ROOF

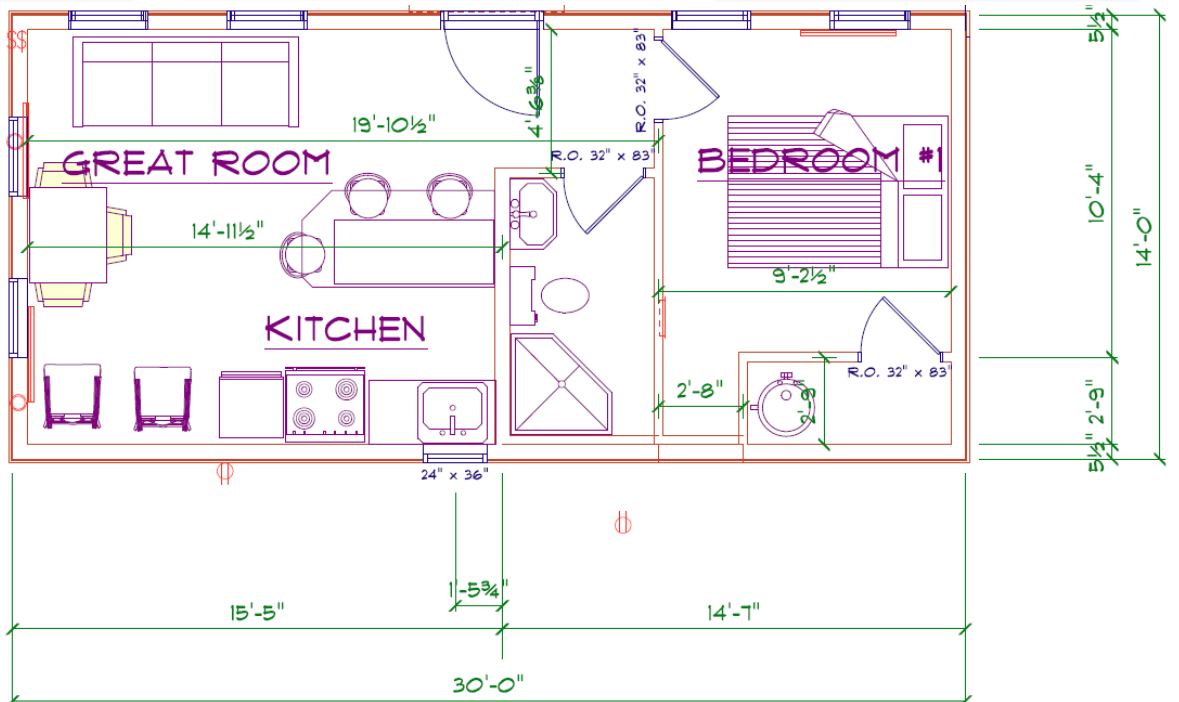
### HOOK UPS

- 100 AMP ELECTRICAL
- 1/2 WATER SUPPLY
- 3" ABS SEWER

### OTHER

- AIR EXCHANGER
- BASEBOARD HEATERS (6000 WATTS) THERMOSTAT
- INDIRECT LED LIGHTING—EXTERIOR
- 9 LED LIGHT FIXTURES
- STONECAST ESTATES FLOORING ON MAIN FLOOR
- CORRUGATED METAL ACCENTS

ASK ABOUT SIZES,  
COLORS, AND CUSTOM-  
IZATION OPTIONS



# The Woodhaven

## 14 x 32 Lofted Barn Cabin with Kitchenette, Bathroom, & Bedroom

### DOORS AND WINDOWS

- (3) 30" INTERIOR DOORS
- (1) 36" ENTRY DOOR W/ 9-LITE WINDOW
- (4) 24"X36" DUAL PANE WINDOWS
- (2) 30"X60" EGRESS WINDOWS

### BATHROOM

- 38"X38" NEO ANGLE SHOWER WITH GLASS DOOR
- (1) VANITY SINK
- (1) TOILET
- HOOK-UPS FOR WASHER AND DRYER

### KITCHEN

- (1) SINGLE KIT SINK
- FRIDGE (9 CUBIC FT)
- 30" RANGE
- MIRCOWAVE

### INSULATION

- R28 FLOOR
- R22 WALLS
- R28 CEILING

### EXTERIOR

- LP SMARTSIDE—URETHANE
- METAL ROOF

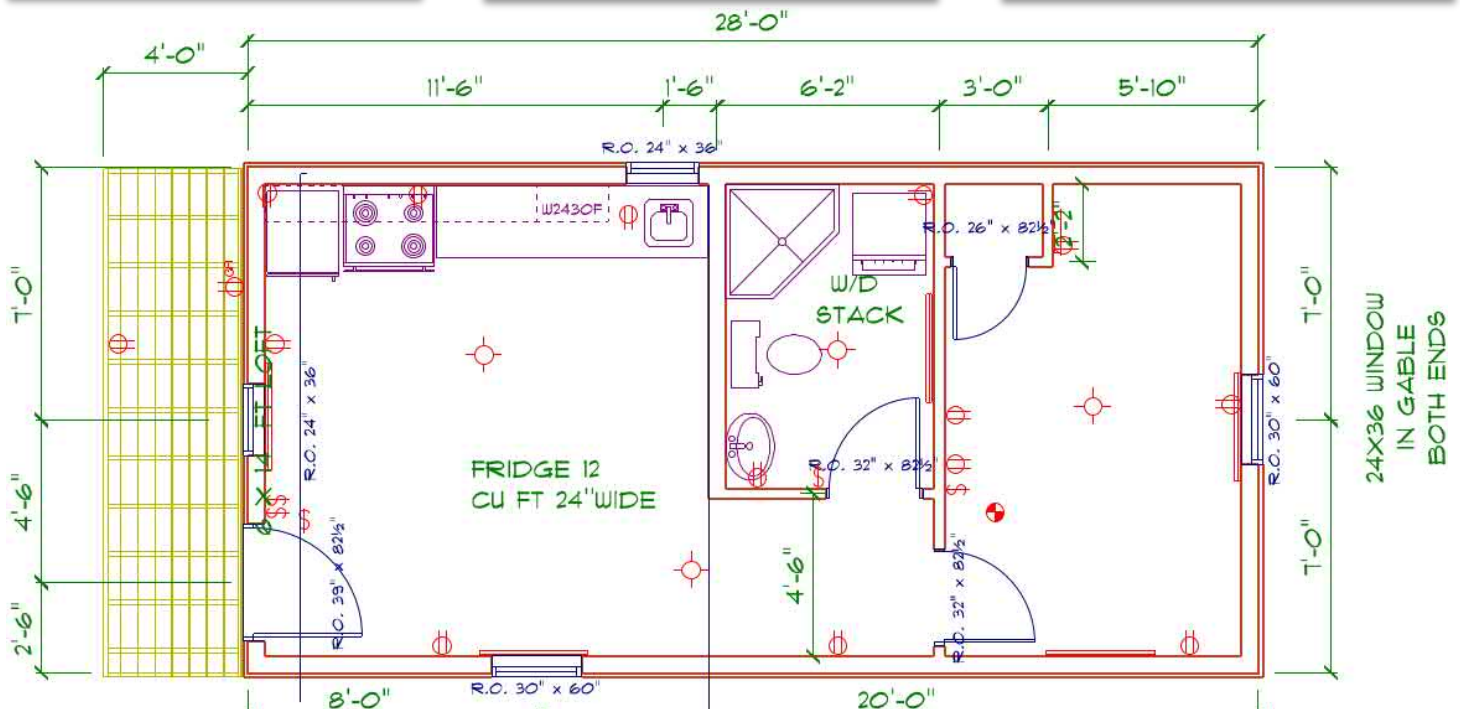
### HOOK UPS

- 100 AMP ELECTRICAL
- 1/2 WATER SUPPLY
- 3" ABS SEWER

### OTHER

- BASEBOARD HEATERS (6000 WATTS)
- HEATERS ON THERMOSTAT
- AIR EXCHANGER
- 100 AMP / 220 VOLT PANEL
- 9 LED LIGHT FIXTURES
- VINYL PLANK FLOORING ON MAIN FLOOR

ASK ABOUT SIZES,  
COLORS, AND CUSTOM-  
IZATION OPTIONS



# The Parkland

## 16 x 30 Cabin with Kitchenette, Bathroom, & Bedroom

### DOORS AND WINDOWS

- (3) 30" INTERIOR DOORS—WHITE
- (1) 36" ENTRY DOOR W/ 9-LITE WINDOW
- (4) 24"X36" DUAL PANE WINDOWS
- (3) 30"X60" EGRESS WINDOWS

### BATHROOM

- 30"X60" ENCLOSED TUB WITH DOME
- (1) VANITY SINK
- (1) TOILET
- 39 GALLON HOT WATER TANK—IN CLOSET

### KITCHEN

- (1) SINGLE KIT SINK
- 12 CU/FT 24" FRIDGE
- 30" ELECTRIC RANGE
- MICROWAVE

### INSULATION

- R30 FLOOR
- R20 WALLS
- R45 CEILING

### EXTERIOR

- LP SMARTSIDE—URETHANE
- METAL ROOF

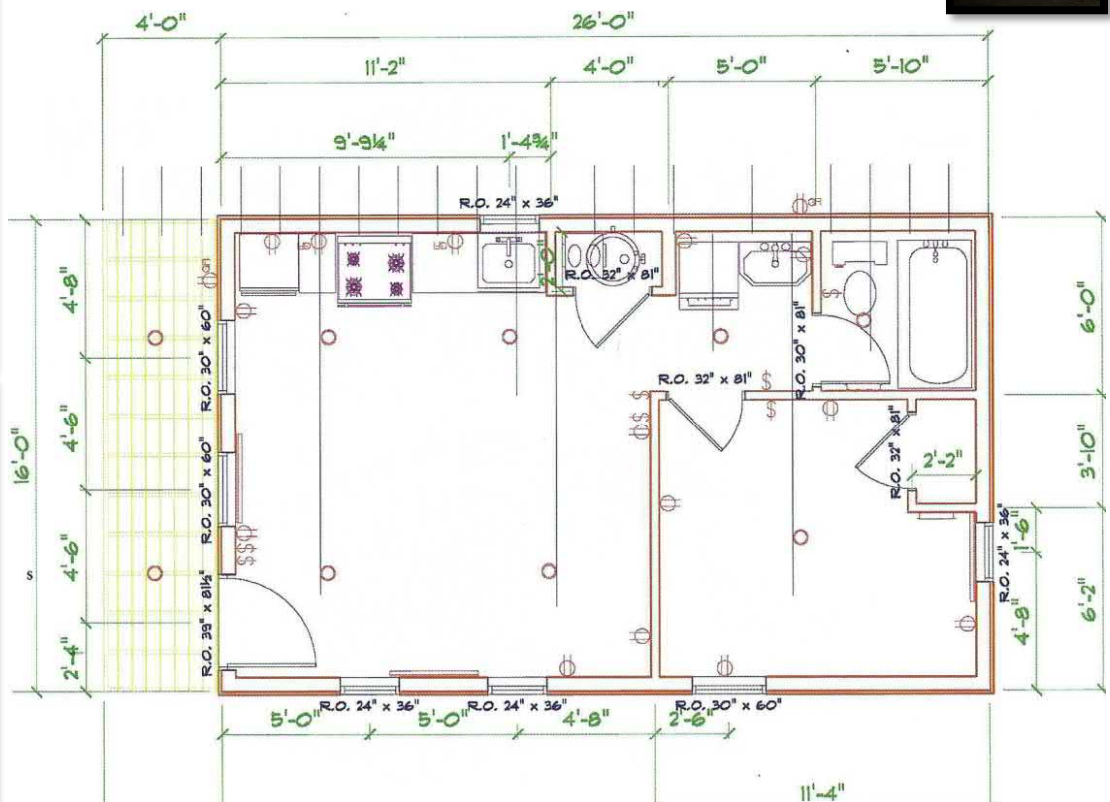
### HOOK UPS

- 100 AMP ELECTRICAL
- 1/2 WATER SUPPLY
- 4" ABS SEWER

### OTHER

- AIR EXCHANGER
- BASEBOARD HEATERS (6000 WATTS)
- HEATERS ON THERMOSTAT
- 100 AMP / 220 VOLT PANEL
- 9 LED LIGHT FIXTURES
- VINYL PLANK FLOORING

ASK ABOUT SIZES,  
COLORS, AND CUSTOM-  
IZATION OPTIONS



# The Garden Hill

## 14 x 36 Cabin with Kitchenette, Bathroom, & Bedroom

### DOORS AND WINDOWS

- (3) 30" INTERIOR DOORS
- (1) 36" ENTRY DOOR W/ 9-LITE WINDOW
- (4) 24"X36" DUAL PANE WINDOWS
- (1) 30"X60" EGRESS WINDOWS

### BATHROOM

- 38"X38" NEO ANGLE SHOWER WITH GLASS DOOR
- (1) VANITY SINK
- (1) TOILET
- 39 GALLON HOT WATER TANK—IN BEDROOM CLOSET

### KITCHEN

- (1) SINGLE KIT SINK
- 4 CU/FT UNDER COUNTER FRIDGE
- 30" ELECTRIC RANGE
- MICROWAVE

### INSULATION

- R28 FLOOR
- R22 WALLS
- R32 CEILING

### EXTERIOR

- LP SMARTSIDE—URETHANE
- METAL ROOF

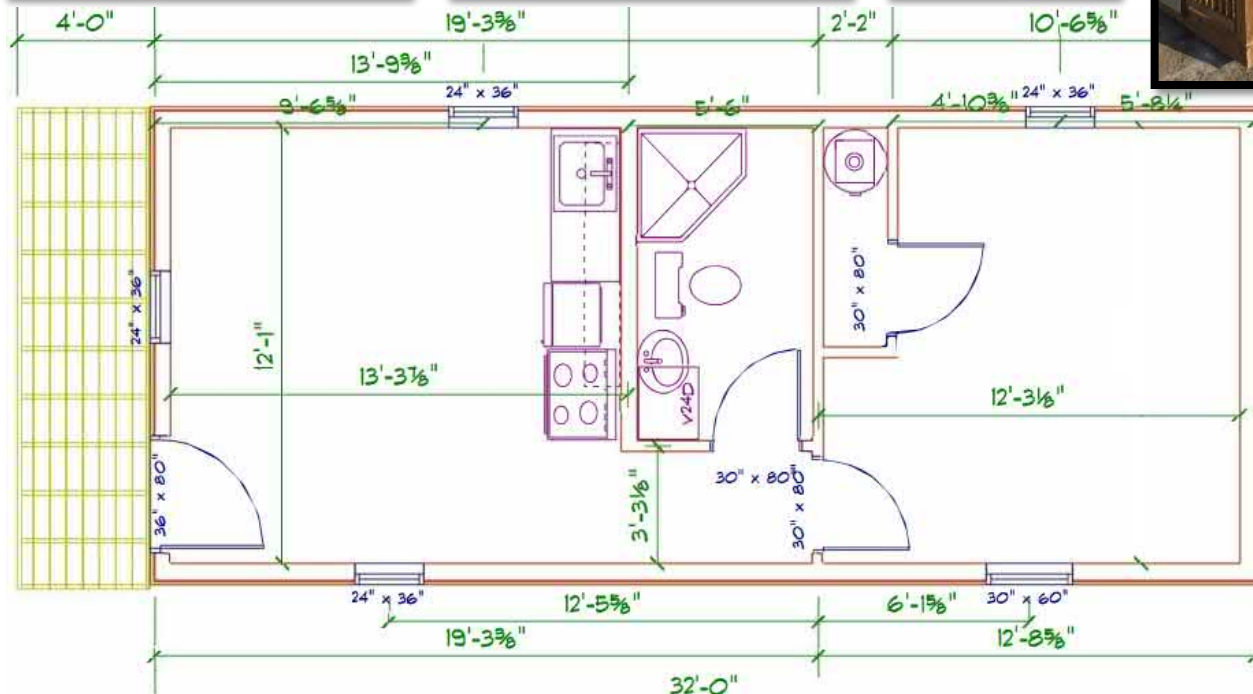
### HOOK UPS

- 100 AMP ELECTRICAL
- 1/2 WATER SUPPLY
- 4" ABS SEWER

### OTHER

- AIR EXCHANGER
- BASEBOARD HEATERS (6000 WATTS)
- HEATERS ON THERMOSTAT
- 100 AMP / 220 VOLT PANEL
- 9 LED LIGHT FIXTURES
- VINYL PLANK FLOORING ON MAIN FLOOR

ASK ABOUT SIZES,  
COLORS, AND CUSTOM-  
IZATION OPTIONS



Prices effective: September 01, 2021 till September 30, 2021

14x40 Pickeral Lake model - \$116,050

14 x 40 Pickeral Lake display model on our lot - \$89,500 o.b.o.

14x40 Country View 1 Brm- \$103,950

14x40 Country View 2 Brm- \$105,050

14x30 Country View - \$97,790

14x32 Woodhaven – only available with out loft \$ 97350

16x30 Parkland - \$104,280 from earlier brochure,

14x36 Garden Hill - ?? from earlier brochure,

16 x 35 Clear Lake - FULL HEIGHT \$172,720 + ONT Delivery  
\$10,000, non CSA

Pickereel Lake Model

# 14X40 LOFTED BARN CABIN 560 SQ FEET



# \$90,500

plus HST

\*Discounted Price\*

Delivered to Kenora Area  
with Residential CSA sticker



## COUNTRYSIDE KENORA

Verlin Penner | M (807)-464-5816 | B (807)-789-4450

RR 1 Site 5 Box 1 | 2010 Hwy 17 West | Keewatin ON P0X 1C0  
verlin@countrysidekenora.ca | www.countrysidekenora.ca

