



PORTABLE BUILDINGS



**BUY
OR
RENT
TO OWN**

Own in 36 or 48 Months
No Credit Check

MADE
IN
CANADA



premierbuildings.ca



**LB Floor Plan
STANDARD**

LB Lofted Barn - Standard Features

6'7" Under Loft Height, Two Reinforced Lofts Located on Opposite Ends of Interior, 70" Door Opening & Double Wooden Doors (Optional Fibreglass Doors), Door Lock and Keys, High-End Durable Hinges, and Spring Latch Hooks Top and Bottom of Left Door Ensures Security.



**SLB Floor Plan
STANDARD**

SLB Side Lofted Barn - Standard Features

6'7" Under Loft Height, Two Reinforced Lofts Located on Opposite Ends of Interior, Two 2'x3' Windows with Latches/Screens, 70" Door Opening & Double Wooden Doors, Door Lock and Keys, High-End Durable Hinges, Spring Latch Hooks Top and Bottom of Left Door Ensures Security.



**LG Floor Plan
STANDARD**

LG Lofted Garage - Standard Features

New Window and Door Configuration! Two 3'x3' Windows with Latches/Screens, One 36"x70" 4-Lite Outswinging Door, One 9'x7' Roll-Up Door, 6'7" Under Loft Height, Two 4' Reinforced Lofts Located on Opposite Ends of Interior, and Premier's New Premium 3/4" Flooring.



**G Floor Plan
STANDARD**

G Garage - Standard Features

Our Classic Low Pitched Gable Roof Garage with New Window and Door Configuration! Two 3'x3' Windows with Latches/Screens, One 36"x78" 4-Lite Outswinging Door, One 9'x7' Roll-Up Door, and Premier's New Premium 3/4" Flooring.



**U Floor Plan
STANDARD**

UTX Utility - Standard Features

Low Pitched Gable Roof, 7'9" Interior Wall Height, 70" Door Opening & Double Wooden Doors, Door Lock and Keys, High-End Durable Hinges, Spring Latch Hooks Top and Bottom of Left Door Ensures Security.



**SU Floor Plan
STANDARD**

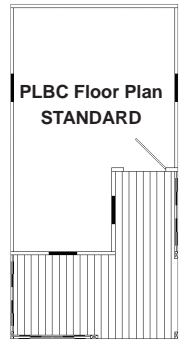
SUTX Side Utility - Standard Features

Low Pitched Gable Roof, 7'9" Interior Wall Height, Two 2'x3' Windows with Latches/Screens, 70" Door Opening & Double Wooden Doors, Door Lock and Keys, High-End Durable Hinges, Spring Latch Hooks Top and Bottom of Left Door Ensures Security. Shown in optional Two Tone.



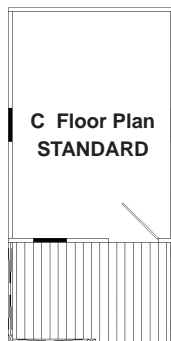
LBC Lofted Barn Cabin - Standard Features

New 6' Deep Porch with Increased Porch Height - 92" from Deck to Ceiling and 6' from Porch Front to Wall, Three 2'x3' Windows with Latches/Screens, 6'7" Under Rear Loft Height, Two Reinforced Loft Spaces Located on Opposite Ends of Interior, 78" 9-Lite Door with Lock and Keys.



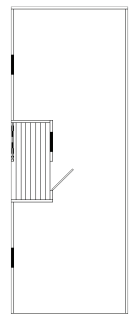
PLBC PREMIER® Lofted Barn Cabin - Standard Features

New 6' Deep Porch with Increased Porch Height - 92" from Deck to Ceiling and 6' from Porch Front to Wall, 6'7" Under Rear Loft Height, Two Reinforced Loft Spaces Located on Opposite Ends of Interior, Four 2'x3' Windows with Latches/Screens with New Optimal Cross Wind Location on Both Sides of the Building, 78" 9-Lite Door with Lock and Keys.



C Cabin - Standard Features

New 6' Deep Porch with Increased Porch Height, Low Pitched Gable Roof, 7'9" Interior Wall Height, Three 2'x3' Windows with Latches/Screens, and 9-Lite 36"x78" Door with Lock and Keys.



**CC Floor Plan
STANDARD**

CC Center Cabin - Standard Features

The Center Cabin includes 8' Wide Porch (option to upgrade to a 12' Wide Porch) with Increased Porch Height, Low Pitched Gable Roof, 7'9" Interior Wall Height, Three 2'x3' Windows with Latches/Screens, and 9-Lite 36"x78" Door with Lock and Keys. Center porch location creates a great natural separation inside. Add some special touches to your own Center Cabin today!

Also available in Center Lofted Barn Cabin ask your dealer for details.



PGS



PCS



PCS Premier Cottage Shed - Standard Features

PGS Premier Garden Shed - Standard Features

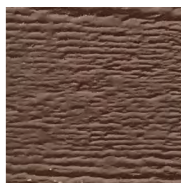
75" Rear Wall & 89" Front Wall. 70" Door Opening with Double Wooden Entry Doors. One 2'x3' Window. Door Lock and Keys, High-end Hinges, Spring Latch Hooks Top and Bottom of Left Door Ensures Security. Not Available in Metal.



MTS Premier Tool Shed

2'x6' Treated Floor, LP 5/8" Tongue and Groove Flooring, 75" 2'x4' Studs. Double Doors with Door Lock and Keys, Spring Latch Hooks Top and Bottom with a Diamond Treadplate.

URETHANE COLOUR OPTIONS (Colours may vary)



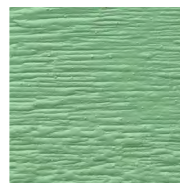
CHESTNUT
BROWN



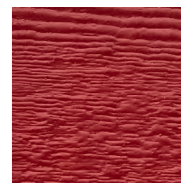
DARK EBONY



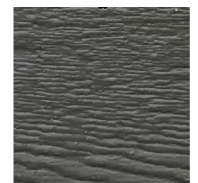
MAHOGANY



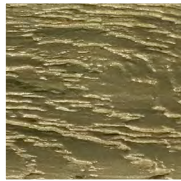
CACTUS



SCARLET RED



DRIFTWOOD



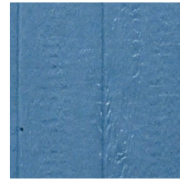
OLIVE



DERBY BROWN



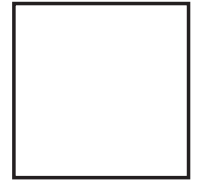
SANDSTONE



SLATE BLUE



GRAY STONE



WHITE

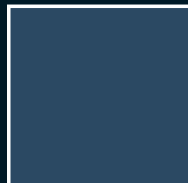
TWO-TONE URETHANE OPTIONS

6'–8' Wide.....	\$100	14'	\$400
10'	\$200	16'	\$500
12'	\$300		

METAL COLOUR OPTIONS (Colours may vary)



BLACK



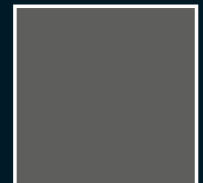
HERON BLUE



COFFEE BROWN



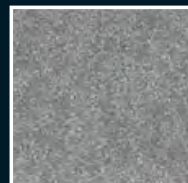
BURGUNDY



CHARCOAL



TAN



GALVALUME



STONE GREY



IVORY



BRIGHT RED



TILE RED



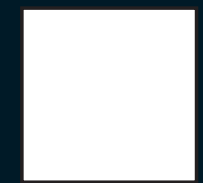
BUCKSKIN



METRO BROWN



MELCHERS GREEN



BRIGHT WHITE

UPGRADE TO METAL SIDING

Upgrade 8'-10' Wide Building to Metal	\$350.00	Upgrade 14' Wide Building to Metal	\$850.00
Upgrade 12' Wide Building to Metal	\$600.00	Upgrade 16' Wide Building to Metal*	\$1,100.00

Metal upgrade includes Fiberglass Double Door Option, wall studs on 24" centers, and OSB Walls.

*16' Wide Metal Upgrade only available in certain regions, ask dealer for details. Trim colour matches Roof colour. Actual colours may vary from those displayed.

Standard In *ALL PREMIER* Buildings

30-year metal roofing.

2" x 6" floor joists set into notched 4" x 6" ground skids.

5/8" tongue and groove flooring.

3/4" tongue and groove flooring in All Garages.

3/8" industry leading siding.

All buildings are sprayed with coloured urethane coating.

Truss plates on doors & trusses for maximum durability.

Standard wooden doors are 70" wide and double-opening.

Diamond-Plate thresholds.

Excluding Cabins

We Accept Credit Cards - No Extra Fees!*



***FREE DELIVERY
AND FREE SETUP!****

**Within a 50 mile radius*



OPTIONAL DOOR & WINDOW UPGRADES

- 70" Double Door \$195.00
- Fibreglass French Door \$425.00
- Loft Space.....\$25/Linear Foot
- Workbenches.....\$25/Linear Foot
- 3 Tier Shelves.....\$25/Linear Foot
- 3/4" Premium Flooring .. \$.60/Sq. Foot
- 2x6 Stud Upgrade.....\$25/Linear Foot
- Extra Height Walls\$25/Linear Foot

All prices are subject to change.



2'x3' Window

Single Pane: \$105.00

Double Pane: \$205.00



3'x3' Window

\$125.00

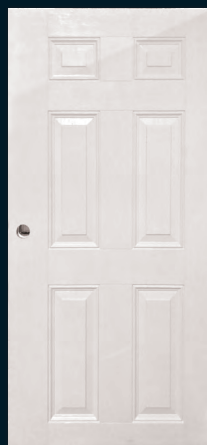


6' Roll-up Garage Door

\$595.00

9' Roll-up Garage Door

\$675.00 (Exceptions Apply)



36" Solid Door

\$325.00



9-Lite 36" Door

\$395.00



4-Lite 36" Door

\$425.00

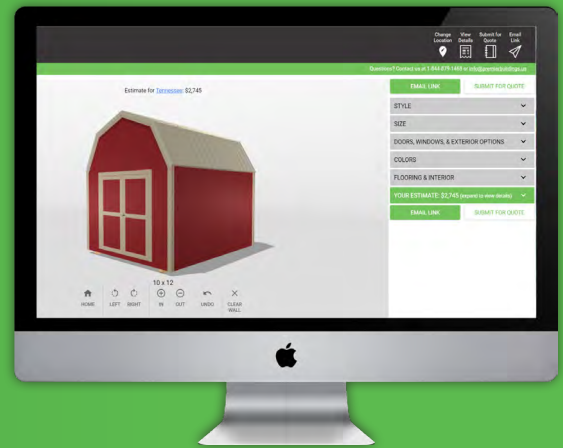
CREATE YOUR OWN PORTABLE BUILDING!

DO YOU NEED A SPECIALIZED BUILDING?

Use our online tool to customize your own shed!

Fully customize the Style, Size, Doors, Windows, Exterior, Colours and Flooring & Interior!

shedview.premierbuildings.us



PERMIT INFORMATION:

Premier Buildings is not responsible for building permits and homeowners association rules and covenants. It is up to the customer to get permits prior to placing order. Customer should be aware of any setbacks and right of ways on property. Customer will incur charges if Premier has to come back and move your building.

DELIVERY INFORMATION:

5-7 business days for on-lot, and 21-24 business days for custom builds, WEATHER PERMITTING. A delivery professional will contact you a few days in advance to schedule your delivery date and time. Premier Buildings is not responsible for permits, code restrictions, damage to yards, driveways, or underground utilities. It is up to the customer to ensure that ground conditions are suitable. Free Delivery includes one trip within 50 mile radius of any Premier dealer location. Pressure-Treated Wooden Blocks for leveling are provided. Concrete blocks may be used but must be provided by customer.

RENT TO OWN:

RENT TO OWN (RTO) was established as an alternative to mini-warehousing. Our no-strings plan allows you to have your own storage facility, extra office space, or even your own get-away right in your backyard. No matter what your need or when, the low monthly rental rates are comparable to mini-warehousing rates per square foot. You are not required to fill out a credit application, nor are you required to keep your building. All Rent To Own payment prices include Basic RTO Payment Protection Plans. Ask dealer for details.

5 YEAR PROTECTION PLUS+ CASH COST: \$220 PAYMENT: \$10.19/36 MONTHS PAYMENT: \$9.17/48 MONTHS

**4 YEAR - CASH COST: \$120
PAYMENT: \$5/48 MONTHS**

**3 YEAR - CASH COST: \$108
PAYMENT: \$5/36 MONTHS**

RTO ASSURANCE PLUS+ COVERAGE. What does that mean to you and your building?

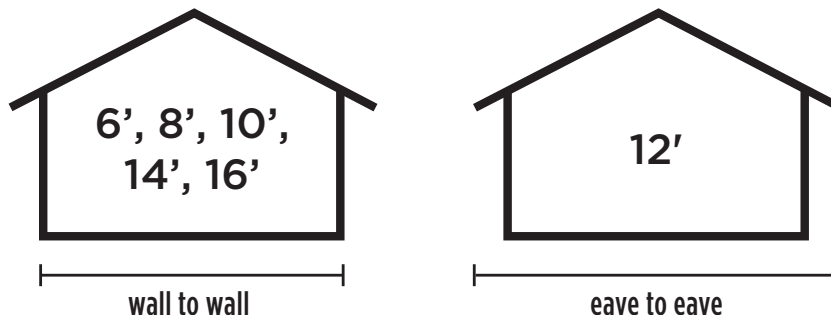
Add RTO Assurance Plus+ for a small monthly fee and take the worry out of unseen mishaps with your building. Coverage includes replacement of destroyed building with the same model number. Customer pays for material and RTO Assurance Plus+ covers labor front to back but not limited to:

Broken Windows, Busted Siding, Damaged Roof, Door Handles (Mailed at No Cost), Door Knobs (Mailed at No Cost), Hinges, Tie Rods, One Time Building Re-Leveling

ADD A 3 YEAR or 4 YEAR STANDARD PLAN FOR AS LITTLE AS \$5 PER MONTH!

Building must be deemed completely destroyed for replacement of building. Pictures required. Does NOT include personal contents.

WARRANTY PHONE: (844) 879-1468



All Buildings measure as shown above. Pilot Vehicles and Wide Load Permits may apply and are not included in the Free Delivery Policy

*All buildings can be upgraded to Metal siding for an additional cost (excluding Cottage & Garden Sheds). See our options list for other opportunities to customize your building to fit your specific needs. **Metal buildings are built 24" on center double studded wall studs.



MILITARY DISCOUNT
Save Everyday!

THANK YOU!

Active and Retired personnel receive the following discounts with Military ID:

Save \$50 on the purchase price of 8' or 10' buildings.

Save \$100 on the purchase price of 12' or larger buildings.

Military discount not available on used buildings or combined with other discounts.